



Virtual Desktop Extender

## Release Notes

Version 10.6.0.1

## **Copyright Notice**

This document is provided strictly as a guide. No guarantees can be provided or expected. This document contains the confidential information and/or proprietary property of Ivanti, Inc. and its affiliates (referred to collectively as "Ivanti") and may not be disclosed or copied without prior written consent of Ivanti.

Ivanti retains the right to make changes to this document or related product specifications and descriptions, at any time, without notice. Ivanti makes no warranty for the use of this document and assumes no responsibility for any errors that can appear in the document nor does it make a commitment to update the information contained herein. For the most current product information, please visit [www.ivanti.com](http://www.ivanti.com).

Copyright © 2022, Ivanti, Inc. All rights reserved.

Protected by patents, see <https://www.ivanti.com/patents>.

# Contents

---

<b>Important Information</b> .....	<b>4</b>
<b>What's New</b> .....	<b>5</b>
<b>Previous versions</b> .....	<b>6</b>
<b>Bug Fixes</b> .....	<b>14</b>
<b>Previous versions</b> .....	<b>15</b>
<b>Additional information</b> .....	<b>21</b>

# Important Information

Each release of Ivanti Virtual Desktop Extender contains all VDX components with a new version number. This is done for versioning purposes and it does not necessarily mean that every VDX component is affected by the enhancements and resolved issues in the release.

The table below shows what components need upgrading when compared to the release before it:

Release	VDX Component Upgrade Required			
	Admin Pack	Engine	Licensing	Plugin
Ivanti VDX 10.6.0.1		✓		
Ivanti VDX 10.6.0.0		✓		
Ivanti VDX 10.5.0.1		✓		
Ivanti VDX 10.5.0.0		✓		✓
Ivanti VDX 10.4.0.0		✓		✓
Ivanti VDX 10.3.70.0		✓		✓
Ivanti VDX 10.3.60.0		✓		
Ivanti VDX 10.3.50.0				✓
Ivanti VDX 10.3.40.0		✓		✓

## What's New

No new features, enhancements, improvements or compatibility updates were included in this version of Ivanti Virtual Desktop Extender.

However, VDX 10.6.0.1 includes several ["Bug Fixes" on page 14](#).

## Previous versions

The following sections covers the new features, enhancements, improvements or compatibility updates introduced in previous versions of VDX. If a version does not appear in this section, then there were no associated new features and enhancements.

- ["VDX 10.6.0.0" on the next page](#)
- ["VDX 10.4.0.0" on page 8](#)
- ["VDX 10.3.70.0" on page 10](#)
- ["VDX 10.3.50.0" on page 12](#)
- ["VDX 10.3.40.0" on page 13](#)

# VDX 10.6.0.0

This section covers new features, enhancements, improvements or compatibility updates included in this version of VDX.

## New Enhancements and Improvements

The following enhancements and/or improvements are part of this version:

### Changing the Start Menu Behavior on Windows Server 2019

When VDX is used on machines running Microsoft Windows Server 2019 or Windows 10 build 1809 or higher, at the beginning of the session, the Windows Start Menu is opened and closed. This occurs only once.

Create the following registry key on the machine where the VDX Engine is installed to disable the opening and closing of the Windows Start Menu at the beginning of the session:

Key	HKEY_LOCAL_MACHINE\Software\RES\VDX Engine
Name	DisableMenuTrigger
Type	DWORD
Value	0 or 1

For more details, see the [VDX Administration Guide](#).

# VDX 10.4.0.0

This section covers new features, enhancements, improvements or compatibility updates included in this version of VDX.

## User Voice Feature Requests

Thank you for your support and continued submission of Product Enhancement Requests using the [Product Ideas page on the Ivanti Community](#). These requests are reviewed every week and form a valuable input for the Workspace Control product roadmap. Please continue to submit your ideas and vote for your favorites.

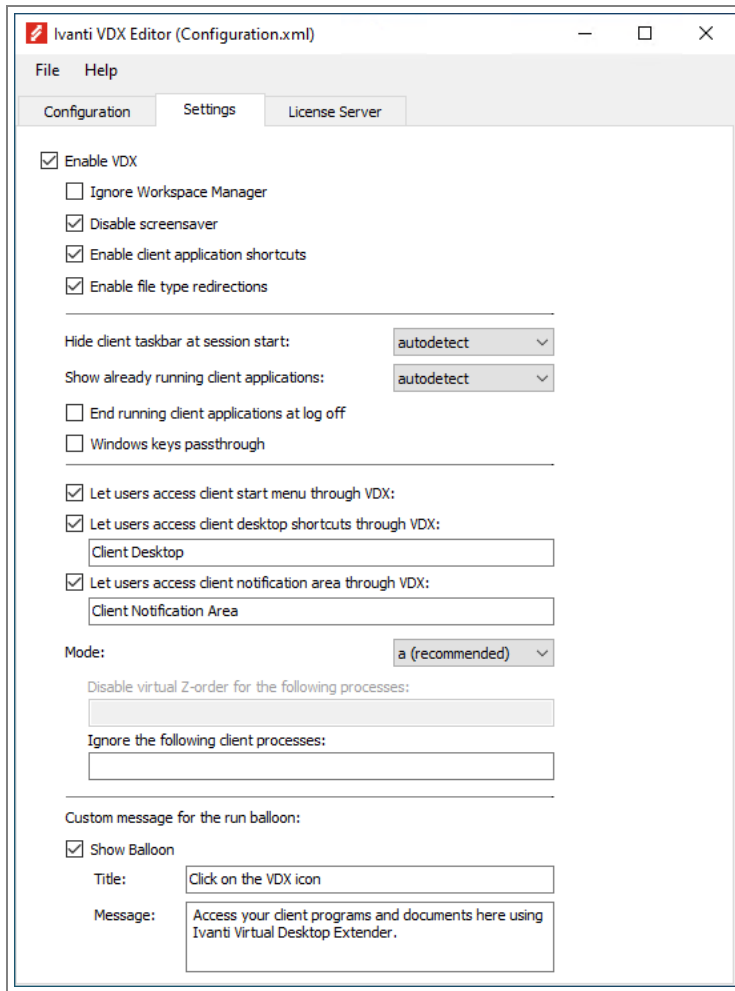
The following user requests have been addressed in this version of VDX:

### VDX Show balloon

The VDX information message can now be enabled or disabled. This message is displayed during session startup of remote sessions running VDX.

In the VDX Editor, under the **Settings** tab, a new option **Show balloon** was added. By default, this option is selected and enables VDX to display an information balloon with the details provided in the **Title** and **Message** options. The information balloon is displayed in the notification area of remote sessions running VDX during startup. Deselecting the **Show balloon** option disables the information balloon from appearing.





More details about this User Voice Feature Request are found on [Ivanti Ideas](#).

# VDX 10.3.70.0

This section covers new features, enhancements, improvements or compatibility updates included in this version of VDX.

## User Voice Feature Requests

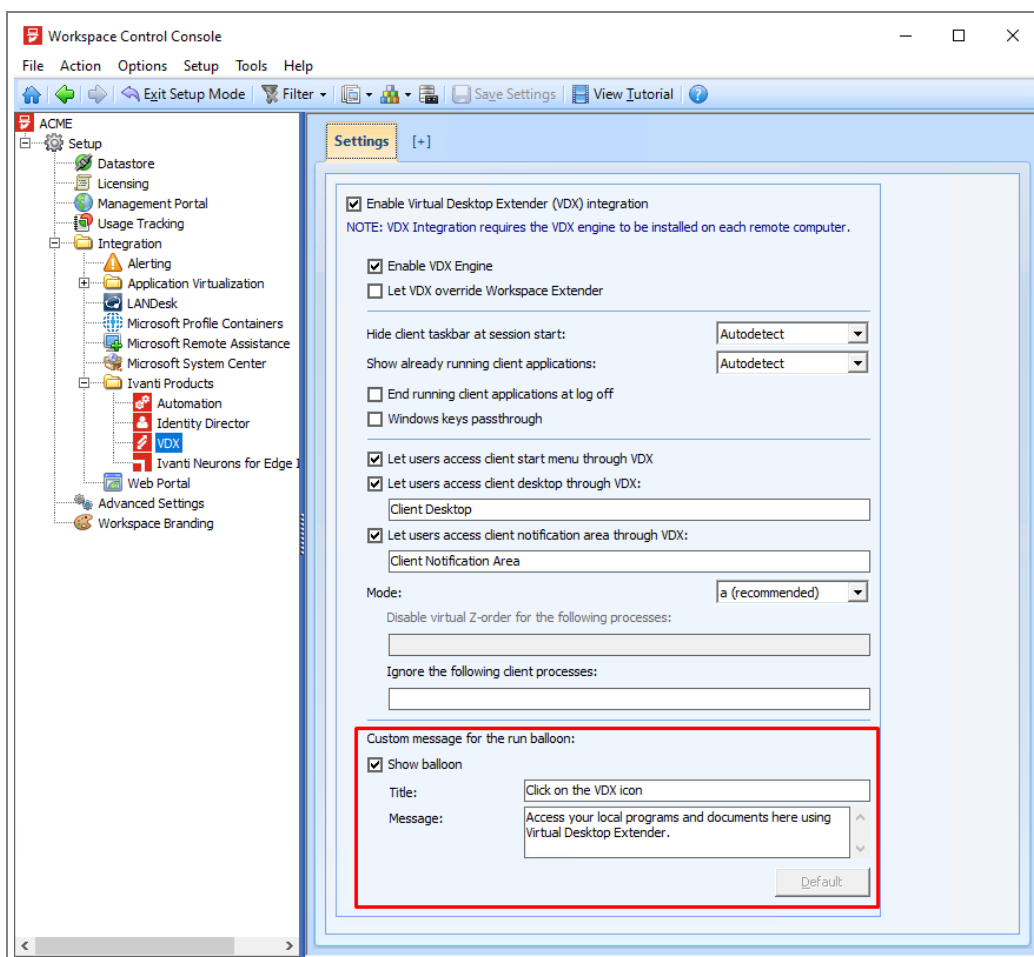
Thank you for your support and continued submission of Product Enhancement Requests using the [Product Ideas page on the Ivanti Community](#). These requests are reviewed every week and form a valuable input for the Workspace Control product roadmap. Please continue to submit your ideas and vote for your favorites.

The following user requests have been addressed in this version of VDX:

## VDX Show balloon for VDX Integration

Using the **VDX integration** for Ivanti Workspace Control, the VDX information message can now be enabled or disabled. This message is displayed during session startup of managed sessions on Workspace Control Agents.

In the Workspace Control Console, under **Setup > Integration > Ivanti Products > VDX > Settings** tab, a new option **Show balloon** was added. By default, when the **VDX integration** is enabled, this option is selected and enables VDX to display an information balloon with the details provided in the **Title** and **Message** options. The information balloon is displayed in the notification area of managed sessions on Workspace Control Agents during startup. Deselecting the **Show balloon** option disables the information balloon from appearing.



For the **Show balloon** option to function, the Workspace Control Agents and the Workspace Control Console need to be upgraded to Ivanti Workspace Control 2021.2 (version 10.6.50.0) or later.

More details about this User Voice Feature Request are found on [Ivanti Ideas](#).

## Compatibility Updates

The following compatibility updates are part of VDX version 10.3.70.0:

### Windows Server 2022

Ivanti VDX now supports Windows Server 2022 operating systems.

# VDX 10.3.50.0

This section covers new features, enhancements, improvements or compatibility updates included in this version of VDX.

## Compatibility Updates

The following compatibility updates are part of VDX version 10.3.50.0:

### Citrix Virtual Apps and Desktops 7 2012 - Virtual Delivery Agent

VDX now correctly manages application windows for applications started through VDX in Citrix XenApp or XenDesktop environments, where the XenApp server or XenDesktop VDI is running Citrix Virtual Apps and Desktops 7 2012 - Virtual Delivery Agent (VDA).

Additional information is found here: [Link to KB article](#).

# VDX 10.3.40.0

This section covers new features, enhancements, improvements or compatibility updates included in this version of VDX.

## New Enhancements and Improvements

The following enhancements and/or improvements are part of VDX version 10.3.40.0:

### VDX manages Universal Windows Platform applications

VDX can now manage Universal Windows Platform (UWP) applications.

The following limitations apply:

- At times, VDX does not correctly retrieve the application's taskbar icon. It can display the incorrect icon, or if no icon is found, the VDX taskbar icon is used instead.
- UWP applications are not included in the VDX Start Menu.

Additional information is found here: [Link to KB article](#).

## Compatibility Updates

The following compatibility updates are part of VDX version 10.3.40.0:

### Windows Start Menu opens correctly

The Start Menu now opens correctly when VDX extended applications are running in remote sessions from Windows Server 2019 or Windows 10 builds 1809 or newer.

Additional information is found here: [Link to KB article](#).

### Local applications are visible during a remote session

Applications that are opened on the local client from the VDX Start Menu are now visible in remote sessions from Windows Server 2019 or Windows 10 builds 1809 or newer.

Additional information is found here: [Link to KB article](#).

## Bug Fixes

The following customer support issues have been resolved in this version of VDX:

Problem ID	Title
Internal finding	Starting with VDX version 10.5.0.0 (except 10.5.0.1), the VDXEngine was not able to get a license due to a coding error. It has been fixed in the current version.

## Previous versions

The following section covers the customer support items resolved in previous versions of VDX. If a version does not appear in this section, then there were no associated new bug fixes.

- ["VDX 10.6.0.0" on the next page](#)
- ["VDX 10.5.0.1" on page 17](#)
- ["VDX 10.5.0.0" on page 18](#)
- ["VDX 10.3.60.0" on page 19](#)
- ["VDX 10.3.40.0" on page 20](#)

# VDX 10.6.0.0

The following customer support issues have been resolved in this version of VDX:

Problem ID	Title
87684	Configuring file type redirections in the VDX Editor causes remote VMware View sessions with an active VDX session to disconnect. After reconnecting to the VMware View session, the VDX session is no longer active and it cannot be reestablished. More details in the following <a href="#">KB article</a> .
90202	When starting an RDP or ICA user session to a machine where the VDX Engine is installed, hovering over the taskbar icon of an active application causes a gray bar to cover part of the screen. The gray bar disappears after stopping the VDX Engine. More details in the following <a href="#">KB article</a> .
Internal finding	When enabled, the Ivanti Start Menu begins to flicker when VDX starts in a Workspace Control managed session.



# VDX 10.5.0.1

The following customer support issues have been resolved in this version of VDX:

Problem ID	Title
Internal finding	Starting with VDX version 10.5.0.0, the VDXEngine was not able to get a license due to a coding error. It has been fixed in the current version.

# VDX 10.5.0.0

The following customer support issues have been resolved in this version of VDX:

Problem ID	Title
88582	Sometimes, the Microsoft Windows 10 Settings window is shown after logging onto remote sessions. More details in the following <a href="#">KB article</a> .
Internal finding	When selecting the VDX taskbar icon, the Client Start Menu is not shown.

## VDX 10.3.60.0

The following customer support issues have been resolved in this version of VDX:

Problem ID	Title
77383	The Ivanti Workspace Control Shell works incorrectly when starting user sessions on Windows Server 2019 machines that have VDX Engine 10.3 installed. <a href="#">Link to KB article</a>

# VDX 10.3.40.0

The following customer support issues have been resolved in this version of VDX:

Problem ID	Title
75692	Command Prompt is not visible during remote sessions when started as a VDX extended application. <a href="#">Link to KB article</a>
75730	VDX stops working after reconnecting to Citrix XenDesktop VDIs. <a href="#">Link to KB article</a>

# Additional information

## VDX Product Area

Product downloads and documentation, or useful configuration and troubleshooting guides are found at the following link:

<https://forums.ivanti.com/s/virtual-desktop-extender>

## VDX Download Links

Downloads links to VDX revisions and their corresponding release notes are available on the Ivanti Community:

<https://forums.ivanti.com/s/article/Ivanti-Virtual-Desktop-Extender-revision-download-links>

## Antivirus Best Practices

Antivirus exclusions required for VDX are found at the following link:

[https://help.ivanti.com/res/help/en\\_US/VDX/10.6/Help/default.htm](https://help.ivanti.com/res/help/en_US/VDX/10.6/Help/default.htm)

## VDX Ideas

Vote for new ideas or submit your own ideas for VDX:

<https://ivantiideas.uservoice.com/forums/928756-workspace-control>

## Administration Guide

Information about installing, configuring, and using VDX is available in the Administration Guide:

[https://help.ivanti.com/res/help/en\\_US/VDX/10.6/Help/default.htm](https://help.ivanti.com/res/help/en_US/VDX/10.6/Help/default.htm)